

## What is OT Sentinel?

**OT Sentinel** automates the monitoring and reporting of operational KPI reliability in PI Vision. Integrated directly with the PI System, it automatically analyzes the PI tags, calculations, and Asset Framework elements that generate dashboard KPIs. The system provides clear reporting on data reliability issues such as broken references, stale signals, and configuration problems that can impact the accuracy of values shown in PI Vision displays. When issues are detected, users can quickly trace where a KPI originates, following the tags and calculations behind it. This makes it easier for engineers to identify root causes and resolve problems before they impact operations.

Tycho Data offers quick start plans for OT Sentinel. This option automatically runs OT Sentinel once monthly and will interrogate and report errors on top 10 PI Vision displays. The program can be used to expedite evaluation of OT Sentinel in your IT environment and features attractive pricing plans.



OT Sentinel does the heavy lifting to enable our team to understand data integrity issues on PI Vision displays. This has allowed us to go faster in delivering value & trust to the business.

OT Data Platform Lead, Global Energy Company

## Benefits

### Improved Trust in Operational Displays

Users can quickly see whether the data behind a PI Vision display is reliable through a clear trust indicator.

### Faster Root Cause Investigation

Users can trace the tags, calculations, and Asset Framework elements behind a metric to quickly identify issues.

### Early Detection of Issues

Automatically identifies stale tags, broken references, missing data, and configuration problems affecting display KPIs.

## Quick Start

Acquiring industrial software can often involve complex evaluations, pilots, ROI studies followed by a lengthy procurement process. This often is a major incumbrance to bringing in next gen technologies. Tycho Data understands and has put forward a program to accelerate the process, move quickly and reduce time & risk on the business. Our quick start program enables customers to evaluate OT Sentinel in their environment over a lengthy period enabling the business to fully evaluate the utility prior to making a major investment. Ask us about the details.

Figure 1: OT Sentinel - PI Vision Display Errors

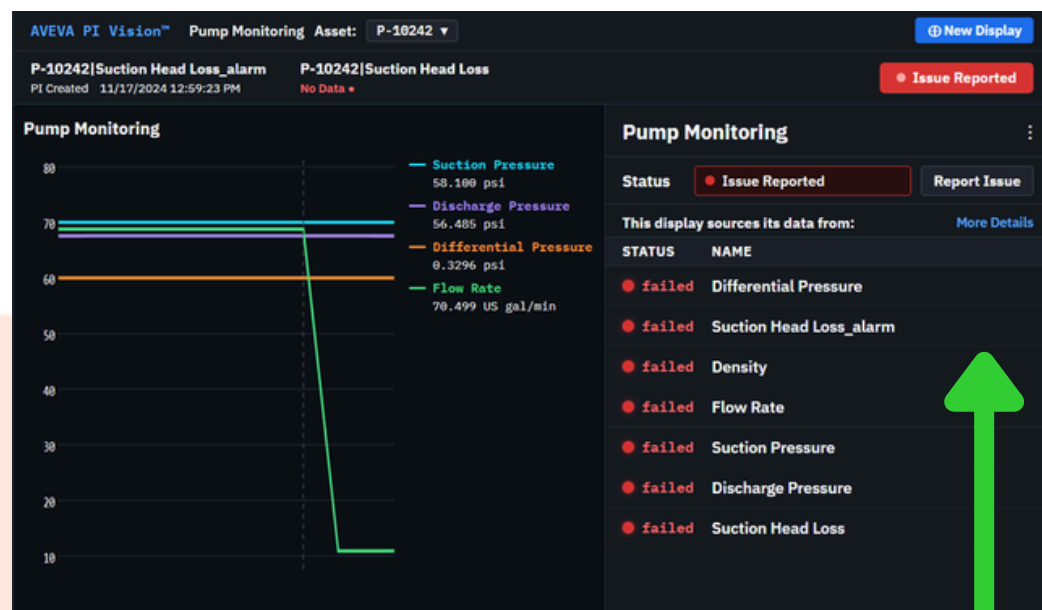
SYSTEM HEALTH	HEALTHY	ISSUES			
1,797 total displays	1,719	78			
DISPLAY NAME	DATA STREAMS	DAYS OPEN ↓	ISSUE	ROOT CAUSE	MODIFIED BY
-Lube Oil Skid Trends	8/7✓/1X	82d	Drift	LO_SKID.Press.PV	John H.
-Suction Header Pressure	14/11✓/3X	73d	Stale	HDR_SUCT.PT-204.PV	Omar B.
-Feed Pump 101B Vibration	21/20✓/1X	39d	Stale	FP101B.VIB_DE.PV	Julia A.
-Discharge Flow Totalizer	34/31✓/3X	15d	Out of Range	FT-301.Totalized.PV	Samantha T.
-Bearing Temp Monitor 104A	12/10✓/2X	7d	Out of Range	FP104A.BRG_NDE.TMP	Lucas M.

OT Sentinel identifies PI Vision displays with issues and their root causes

## Related Products

- Osprey
- Compass
- Forge
- Asset Framework Accelerator
- Pulse

Figure 2: Pulse Badge



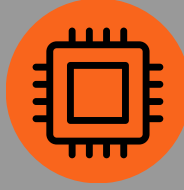
Trust Badge expanded to show specific data issues

## Advanced Technology



### PI Vision Display Analysis

Identify metrics and their upstream dependencies



### Operational Data Profiling

Detect stale signals, flatlined values and missing data



### OT Lineage

Mapping across tags, calculations, and visualization layers



### Secure Deployment

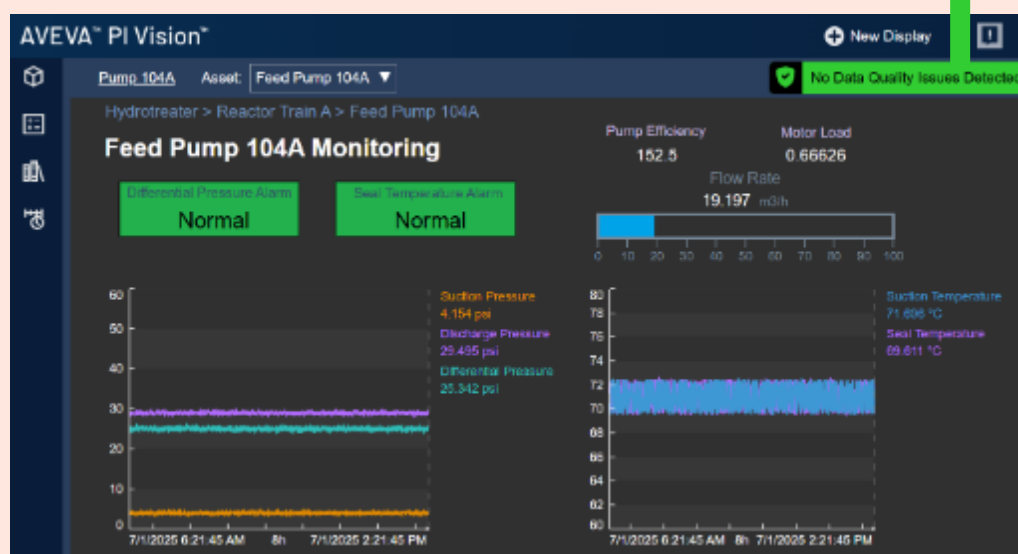
Private cloud & on - premise options available

**90%** Faster Root Cause Identification

**100s** Engineering Hours Saved Annually Troubleshooting

**↑ TRUST**

Figure 3: Pulse Badge



Trust badge indicates no data disruptions

## About Tycho Data

Tycho Data is a next-generation industrial data management company helping organizations derive value, trust and use their operational data.

Industrial teams spend significant time preparing, validating, and troubleshooting OT data before it can be used for operations, analytics, or AI.

To learn more visit [www.tychodata.com](http://www.tychodata.com)

## Why Use the PI Vision OT Sentinel?

1. **Trust** - Ensures data integrity in PI Vision displays are confirmed to be based on reliable tags, calculations, and logic.
2. **Productivity** - OT Sentinel proactively surfaces data errors enabling engineers to quickly discover where display data originated from without relying on support & admin teams to trace tags and calculations.
3. **Knowledge Preservation** - Complex relationships between tags, calculations, and KPIs are visible and understandable even as experienced engineers leave.

# TYCHO DATA



Worldwide Headquarters  
305 E Huntland Dr  
5th Floor #3088  
Austin, TX 78752

Visit: <https://www.tychodata.com/solutions/ot-sentinel>  
Email: [info@tychodata.com](mailto:info@tychodata.com)